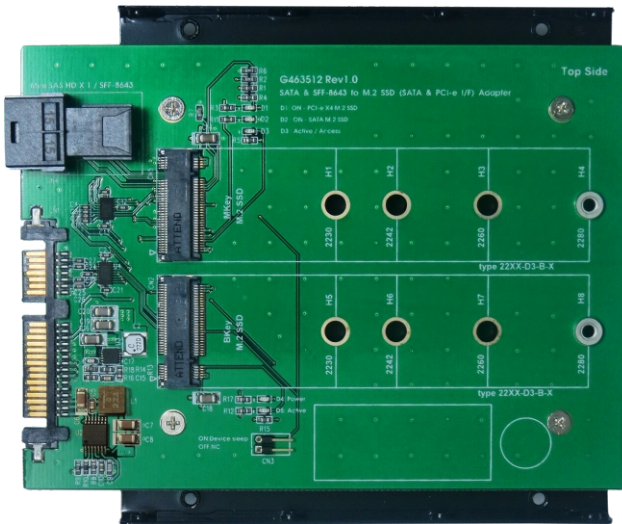


ADAPTER

M.2 (PCI-e I/F) to Mini SAS HD & M.2 (SATA I/F) to SATA



Features

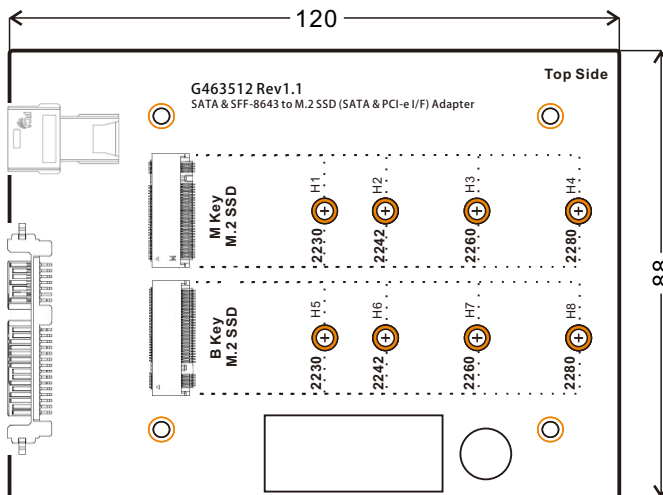
- M.2 (PCI-e I/F) to Mini SAS HD(SFF-8643)PCI-e convert
- M.2 (SATA I/F) to SATA III convert
- Build in Mini SAS HD(SFF-8643) Female connector
- Build in SATA 7+15pin connector
- Build in M.2 (NGFF) M-key Female connector
- Build in M.2 (NGFF) B-key Female connector
- D1 on indicates M.2 / PCI-e 4 Lanes device power OK
- D2 on indicates M.2 / SATA III device power OK
- D1 / off & D2 / off indicates M.2 / PCI-e 2 Lanes device power OK
- D3 indicates M.2 (PCI-e I/F) active status

Compliance

- NVM Express™ 1.0
- Support SATA Reversion 3.2
- PCI Express M.2 Spec. Revision 0.7, Version 1.0
- PCI Express® Base Specification Rev 3.0
- PCI Express Card Electro-Mechanical* (CEM) Specification Rev 2.0
- SFF-8643 Specification Rev 3.5
- Build in M.2 (NGFF) B-key Female connector
- D4 on indicates M.2 / SATA III device power OK
- D5 indicates M.2 (SATA I/F)active status

Power

- PWM synchronous buck converter Power IC for M.2(PCIe I/F) Device
※4A maximum output current
- PWM synchronous buck converter Power IC for M.2(SATA I/F) Device
※3A maximum output current



SFF
8643

M.2 SSD
PCI-e

M.2 SSD
SATA

